
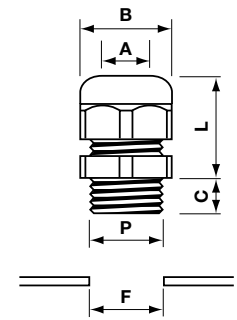




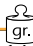
CABLE CLAMPS

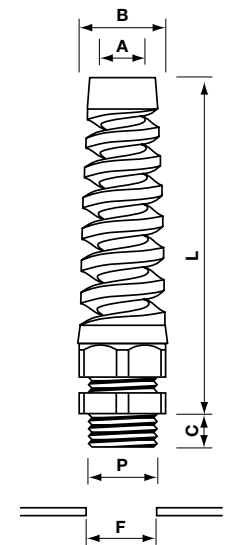
TYPE (1)

P		F	A	B	C	L	CODICE
PG7	4	12,5	3-6,5	15	8	18-22	<b>010NPG7</b>
PG9	6	15,5	4-8	19	8	22-26	<b>010NPG9</b>
PG11	9	19	5-10	22	8	23-28	<b>010NPG11</b>
PG13,5	11	20,5	6-12	24	10	24-29	<b>010NPG13</b>
PG16	13	22,5	9-14	27	10,5	26-31	<b>010NPG16</b>
PG21	21	29	13-18	33	12	30-35	<b>010NPG21</b>
M16 x 1,5	7	16,5	5-10	22	8	23-28	<b>010NM16</b>
M20 x 1,5	11	20,5	6-12	24	10	24-29	<b>010NM20</b>
M25 x 1,5	16	25,5	13-18	33	12	30-35	<b>010NM25</b>




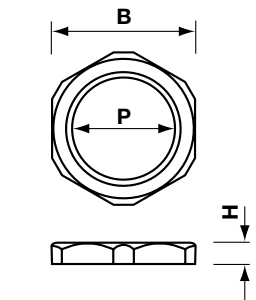
SPIRALS (1)

P		F	A	B	C	L	CODICE
PG11	16	19	5-10	22	8	80	<b>010FPG11</b>
PG13,5	19	20,5	6-12	24	10	90	<b>010FPG13</b>
PG16	25	22,5	9-14	27	10,5	100	<b>010FPG16</b>
PG21	25	29	13-18	33	11	111	<b>010FPG21</b>
M16 x 1,5	10	16,5	5-10	22	8	80	<b>010FM16</b>
M20 x 1,5	19	20,5	6-12	24	10	90	<b>010FM20</b>
M25 x 1,5	33	25,5	13-18	33	12	112	<b>010FM25</b>




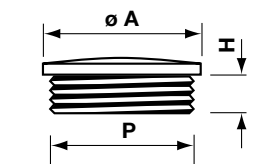
LOCK-NUT (1)

P		B	H	CODICE
PG7	1	19	5	<b>010DPG7</b>
PG9	2	22	5	<b>010DPG9</b>
PG11	2	24	5	<b>010DPG11</b>
PG13,5	2,5	27	6	<b>010DPG13</b>
PG16	3	30	6	<b>010DPG16</b>
PG21	3,5	36	7	<b>010DPG21</b>
M16 x 1,5	1,5	24	6	<b>010DM16</b>
M20 x 1,5	2	27	6	<b>010DM20</b>
M25 x 1,5	3	34	7	<b>010DM25</b>



PLUGS (2)

P		ø A	H	CODICE
PG7	1	15	6	<b>010TPG7</b>
PG9	1,5	19	6	<b>010TPG9</b>
PG11	2	22	7	<b>010TPG11</b>
PG13,5	2	25	7	<b>010TPG13</b>
PG16	3	27	7	<b>010TPG16</b>
PG21	5	33	9	<b>010TPG21</b>
M16 x 1,5	2	22	6	<b>010TM16</b>
M20 x 1,5	2,4	24	7	<b>010TM20</b>
M25 x 1,5	4	33	9	<b>010TM25</b>



(1) VO (UL94) self-extinguishing PA6 polyamides- Operating temperature -20° ÷ +60°  
 (2) PS Polystyrene - Operating temperature -20° ÷ +60°