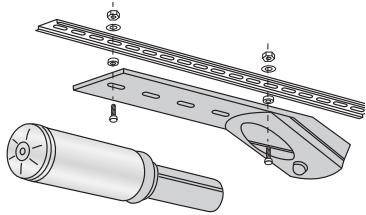


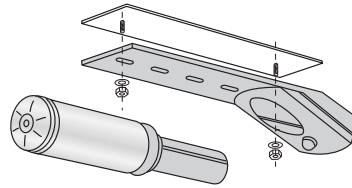


When engineering this exclusive lighting system, one of the main aims of the designers was to ensure the possibility of directing the light source where this is most needed during inspection and checking of equipment, thus providing a versatile and compact instrument.

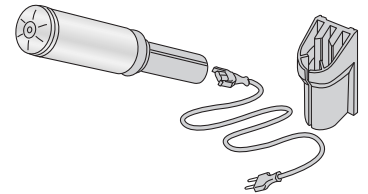
New, modern production systems are increasingly characterised by scheduled maintenance programmes according to which the operators must make individual checks on all the efficiency indicators which, for justifiable problems of industrialisation, are often located in dimly lit areas; for example, liquid level indicators, displays, clocks, fuses, conditioners, filters, gauges, timers, thermostats, etc.



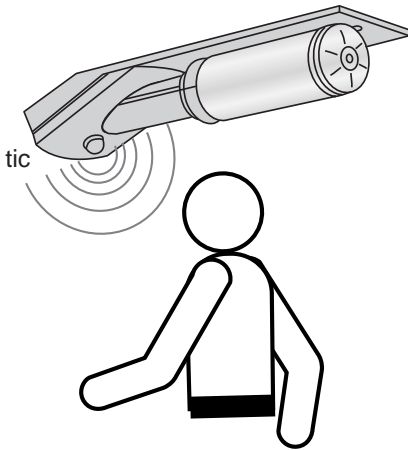
Fastening with DIN bracket



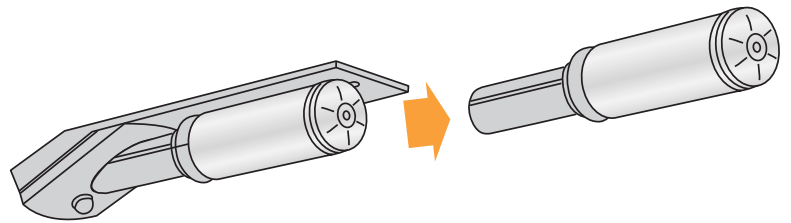
Fastening with magnetic plate



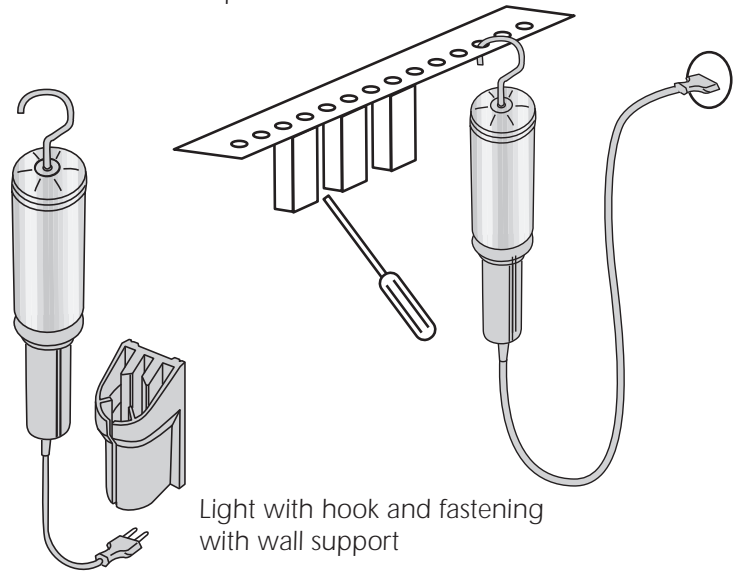
Fastening with wall support



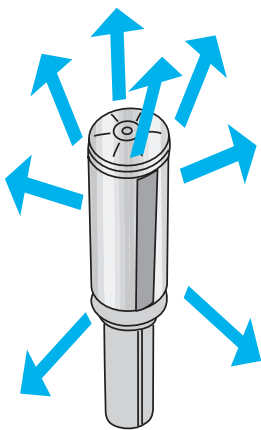
Switching on of the light with presence sensor



Removable for free inspection



Light with hook and fastening with wall support

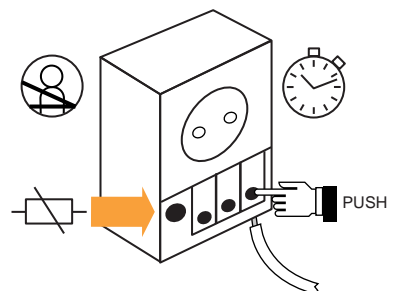


Integral diffusion of the light



Complete heat and electrical insulation

Safety and speed of installation are the main features of the sockets





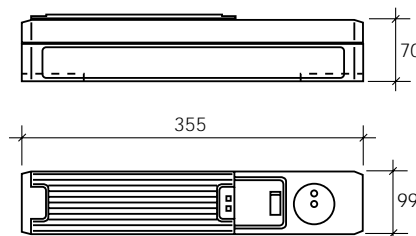
LIGHT WITH VDE SOCKET



gr.	CODE
1050	050LQPVDE

TECHNICAL DATA

POWER SUPPLY	230V/50Hz
BULB	Energy saving fluorescent - 11W
BRIGHTNESS	900 Lm
LIFE	5.000 h
RADIO INTERFERENCE	Complying with VDE 0712 IEC 82
SOCKET	Incorporated 250V AC/16A
INSTALLATION	With magnetic plate or DIN bracket
MATERIAL	Thermoplastic
DEGREE OF PROTECTION	IP 20
STANDARDS	VDE



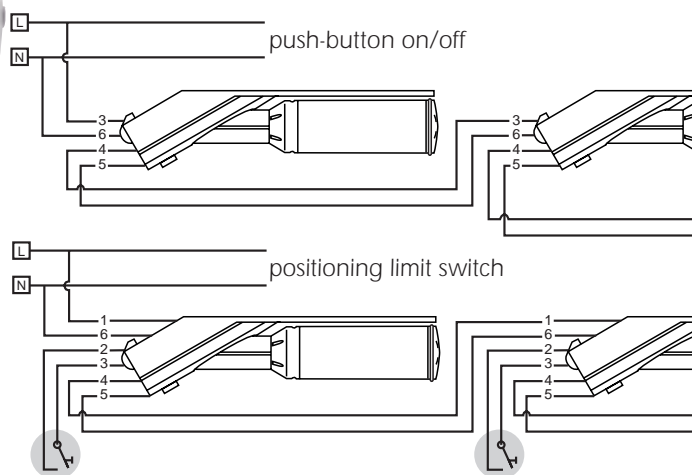
LIGHT FOR CABINET WITH ON/OFF SWITCH



gr.	CODE
619	050LQP

TECHNICAL DATA

POWER SUPPLY	220-240V / 50-60Hz
BULB	Energy saving fluorescent - 20W E 27 attachment
BRIGHTNESS	1.000 Lm
COLOUR OF LIGHT	White
LIFE	10.000 h
INSTALLATION	With screws or magnetic plate ⁽²⁾
MATERIAL	Thermoplastic
DEGREE OF PROTECTION	IP 20 - class II



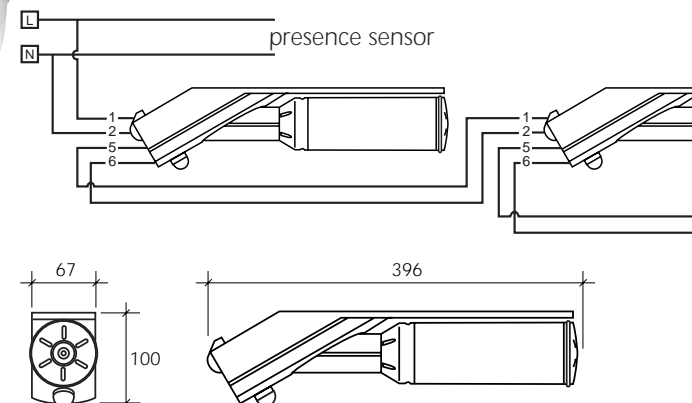
LIGHT FOR CABINET WITH PRESENCE SENSOR



gr.	CODE
622	050LQS

TECHNICAL DATA

POWER SUPPLY	220-240V / 50-60Hz
BULB	Energy saving fluorescent - 20W E 27 attachment
BRIGHTNESS	1.000 Lm
COLOUR OF LIGHT	White
LIFE	10.000 h
INSTALLATION	With screws or magnetic plate ⁽²⁾
MATERIAL	Thermoplastic
DEGREE OF PROTECTION	IP 20 - class II



(1) Not to be used on cabinets with doors made of glass or transparent materials
(2) See brackets chapter on page 15

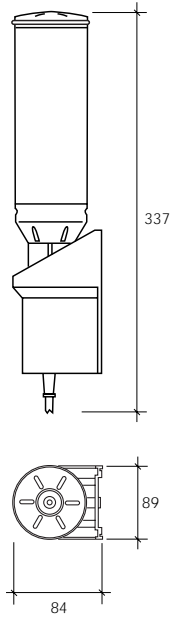


REMOVABLE LIGHT FOR CABINET

gr.	CODE
634	050LQR

TECHNICAL DATA

POWER SUPPLY	220-240V / 50-60Hz Complete with 2-m cable
BULB	Energy saving fluorescent - 20W E27 attachment
BRIGHTNESS	1.000 Lm
COLOUR OF LIGHT	White
LIFE	10.000 h
INSTALLATION	With screws
MATERIAL	Thermoplastic
DEGREE OF PROTECTION	IP 20 - class II

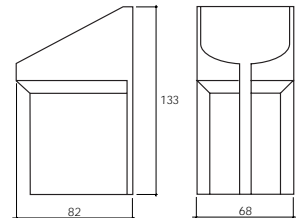


ACCESSORIES FOR MANUAL LIGHTS



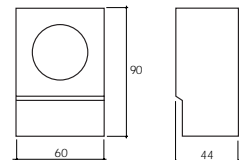
SUPPORT FOR REMOVABLE LIGHTS

gr.	CODE
234	050SLO



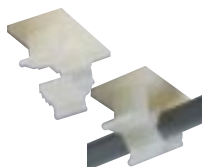
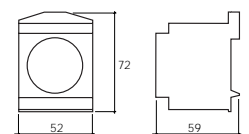
VDE SOCKET WITH PROTECTION FUSE

gr.	CODE
113	050PFVDE



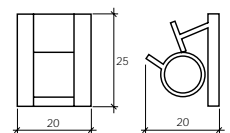
VDE SOCKET

gr.	CODE
68	050PVDE



CLIP FOR CABLE CLAMPING⁽¹⁾

gr.	CODE
2	050CLIP



(1) The cable can be released for hand-held use of the light using a handy lever.