

Extreme small relay module (6,2mm) with replaceable relay. The A1/ A2-connections of several modules arranged next to each other can be simply connected by a bridge. The supply includes the designation sign.

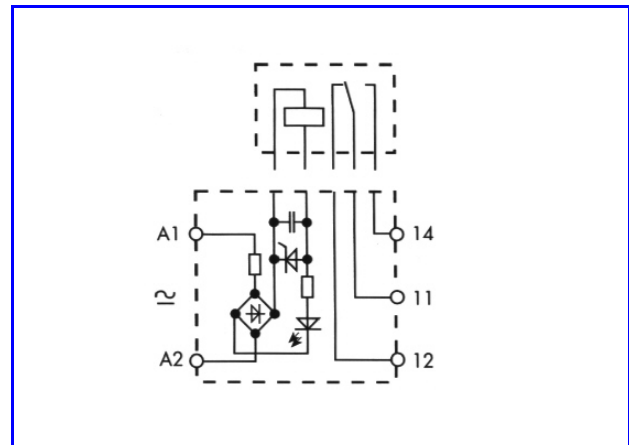
- 6.2mm-housing
- Plug-in relay AC 250V/6A
- LED indication
- Polarity and overvoltage protection
- ADC 12, 24 and AC 230V-types available
- 35mm DIN rail mounting



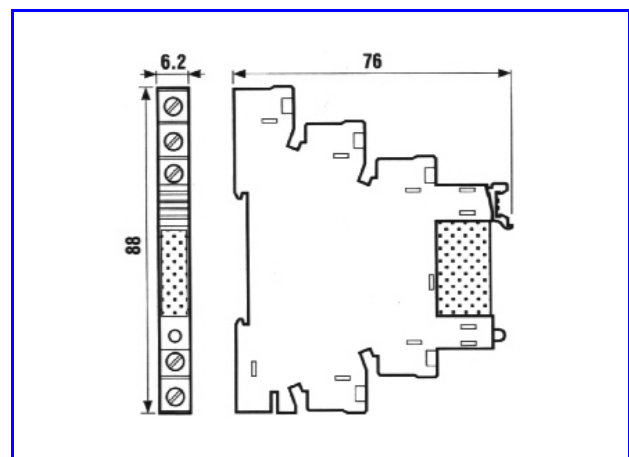
Coil-data at 20°C

Rated voltage Un	Rpm	Rpm max	Rated current In
ADC 12V	9.1V	16.8V	15.2mA
ADC 24V	18.2V	33.6V	9.4mA
AC 230V	175V	255V	3.1mA

Specifications	
Input voltage	ADC12/24V, AC230V
LED	green
Output	1 changeover contact AC 250V
Contact life	mechanical 2x10 ⁶ operations
Switching capacity	AC1: max. 6A/250V max. 1500VA AC15: 300VA at 230V DC1: max. 5A / 30V
Temperature range	0° - + 70°C
Isolation voltage	4kV (contact - coil)
On-/off-delay	7/11ms
Weight	approx. 150g



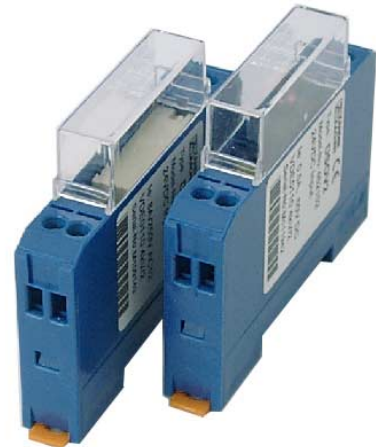
Order-No	Type
463000	DSR ADC12V Input
463001	DSR ADC24V Input
463002	DSR AC230V Input
463020	Bridge with 20 modules, max. 36A
463030	spare relay for 463000, VPE 10pc
463031	spare relay for 463001, VPE 10pc
463032	spare relay for 463002, VPE 10pc



The DSV system consists of high-quality interface modules and function modules in extremely compact housing for 35mm-DIN-rail.

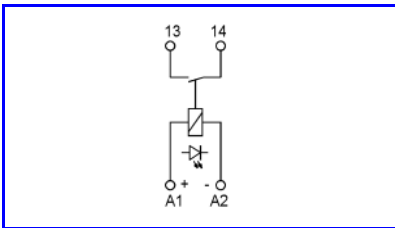
ZANDER offers a complete, modular system: Opto coupler modules, relay modules, electric rectifiers as well as numerous customized variants as voltage stabilizers, resistor and diode components etc..

- extremely compact housing 12.5mm
- opto couplers and relays with high contact ratings
- customized variants



Relay interface DSRV1

Relay module with one N/O or one N/C contact including LED in the input circuit.



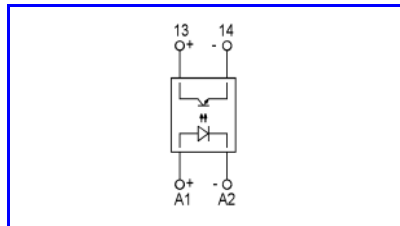
Specifications	
Input voltage	DC12 / 24V, +15/-10%
Input resistance	1500 Ohm / 24V, 450 Ohm / 12V
LED	Yellow, closed contact
Protection	IP20
Output	1 N/O or 1 N/C contact
Switching capacity	AC: max. 8A / 250V / 1500VA DC: max. 2,5A / 24V / 80W
Isolation voltage	4kV (contact - coil)
Temperature range	0° - + 60°C
Weight	approx. 40g

Order-No	Type
461000	DSRV1 DC12V Input, 1 N/O
461001	DSRV1 DC24V Input, 1 N/O
461010	DSRV1 DC12V Input, 1 N/C
461011	DSRV1 DC24V Input, 1 N/C

Optocoupler Interface DSOV2

Opto coupler module with DC input, LED, input noise suppression and diode protection circuit at the output.

Input voltages and input currents have defined levels.

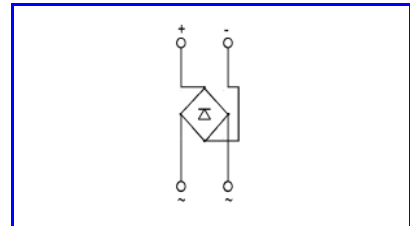


Specifications	
Input voltage	12 / 24V, +/-15% residual ripple < 5%
Input current	< 10mA
Switching threshold "H"	approx. 70% of input voltage
Switching threshold "L"	approx. 50% of input voltage
LED	Yellow
Protection	IP20
Output	Transistor
Switching capacity	DC10-60V; 0,5A permanent; peak 4A (1s)
Residual voltage drop	approx. 1,0V (output)
Signal delay	max. 0,1ms
Temperature range	0° - + 60°C
Weight	approx. 40g

Order-No	Type
462101	DSOV2 DC12V Input
462102	DSOV2 DC24V Input

Electric Rectifier Module DSGV

Miniature electric rectifier module of high capacity and small dimensions.



Specifications	
Max. voltage	250V
Max. current	2,5A
Temperature range	0° - +60°C
Protection	IP20
Weight	approx. 40g

Order-No	Type
465502	DSGV 2,5A 250V

